

About CW&PRS

Established in 1916, the Central Water and Power Research Station (CW&PRS), Pune, is the premier National Institute devoted to water and power resources development and water-borne transport. The scope and magnitude of the services offered by CW&PRS cater to the research and development needs of the country. As the UN recognized Regional Laboratory for ESCAP region, CW&PRS has offered its services in following major disciplines.

- River Engineering
- River and Reservoir System Modeling
- Reservoir and Appurtenant Structures
- Coastal and Offshore Engineering
- Foundation and Structures
- Applied Earth Sciences
- Instrumentation, Calibration & Testing Services

For more details about CW&PRS, please visit

www.cwprs.gov.in

Venue and Date

The Online training course will be held between 1000 hrs to 1700 hrs from 9th - 10th September, 2025 at Central Water & Power Research Station (CW&PRS), Khadakwasla, Pune-411024.

Target Group

The training course is intended for Serving Engineers of Government departments / PSUs, Professionals / practicing and design engineers, Post Graduate Students, Academicians and Researchers who are involved in Rainfall runoff modeling for ungauged catchment.

Registration

Interested participants can register themselves by link provided for the registration/ sending the registration form attached with the brochure to coordinator / co-coordinator in the mail provided in the brochure. On successful completion of the training program a digital

certificate of participation will be issued for the registered participants. However, an approved list of participants will only be allowed to attend the online sessions. **Participants can register by clicking on the link below and filling out the registration form on or before 2nd September, 2025.**

<https://forms.gle/U2RtekCav4EdpKVT7>

Fees Structure: Nil.

Accommodation: Nil

For any further information, please contact:

1) Course Coordinator:

I. *Shri Srishailam C, Scientist-D*

Ph.No..020-24103279/ +91 9028526018
and

II. *Dr (Smt) Annapurna Patra, Scientist-D*

Ph.No. 020-24103273 / + 91 9552306542
Email: annapurna.p@cwprs.gov.in

2) Co-Coordinator:

Shri Vivekanandan N, Scientist C

Ph.No.020-24103367/ +91 9665390540
Email: vivek.n@cwprs.gov.in

3) Training Management Cell

Ph. No:+91 9422715325
CW&PRS, Khadakwasla, Pune-411024
Email: cwprstraining@gmail.com



सत्यमेव जयते
Government Of India

Online Training Course on "Rainfall Runoff Modeling for Ungauged Catchment"



Date: 9 – 10 September 2025



**Government of India
Ministry of Jal Shakti**

Department of Water Resources,
River Development and Ganga Rejuvenation
Central Water & Power Research Station
Khadakwasla, Pune-411024

**Dr. Prabhat Chandra
Director**

Preamble

The River and Reservoir System Modeling laboratory of CWPRS undertakes studies in meteorology, applied hydrology, physico-chemical methods for water quality and hydraulics of surficial processes. This laboratory consists of three technical divisions which deals with various aspects of Hydrometeorology, Water Quality Analysis and Modelling and Surface Water Hydraulics. The laboratory conducts studies in river and reservoir systems by field experimentations, mathematical modeling tools and site specific desk studies.

Course Objective

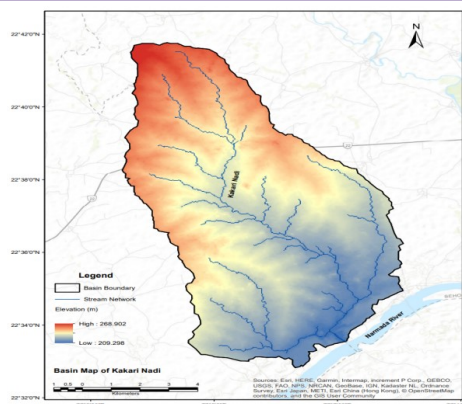
The training program is designed to equip the participants with the knowledge and skills necessary to effectively utilize modeling techniques of Rainfall Runoff for Ungauged Catchment. In addition, participants will be introduced to the basics of Hydrological modeling, estimation of design flood and application of hydrological modeling in flood moderation. On the completion of course participants will become familiar with different types of rainfall-runoff models used in flood management, understand their underlying principles and gain knowledge in utilizing these models to arrive at design flood for hydraulic structures.

Course Content

The training course will provide the state-of-the-art information through a series of lectures by CW&PRS experts about Rainfall runoff modeling. This will cover theory as well as demonstration as a part of the training course.

Key Highlights of the course:

- Rainfall analysis
- Use of Bhoonidhi platform for downloading Digital Elevation Model (DEM)
- Rainfall data measurement and collection
- Testing of rainfall sensor for reliable data measurement.
- Catchment delineation
- Catchment parameters estimation
- Design flood estimation by Rational and empirical formula.
- Design flood estimation as per CWC guidelines
- Hydrologic routing technique for flood moderation.



Participation

The nomination of the participants may be sent to the program coordinator latest by 2nd September 2025.

Registration Form

(In word & PDF format only send through mail)

Name: _____

Designation: _____

Organization: _____

Mailing address: _____

Tel: (Off.) _____ (Res.) _____

Mobile No. _____

Fax: _____

E-mail: _____

Enclosed please find DD No.: _____

Dated: _____ for Rs. _____ drawn on

_____ towards registration fees or Bharat Kosh

Payment details _____

Accommodation required: Yes / No

Date: _____ (Signature of the Participant)